

1. Opening

Home

Up

Step 1: Opening The Psion

Tools Required:-

- Small pozi/Philips screwdriver
- Small blade/pen knife
- Small flat bladed screwdriver
- Small pair of point nose pliers

1. Opening

2. Removing

3. Preparation

4. Attachment

5. Reassembly

Soldering FAQ

Installation Kit

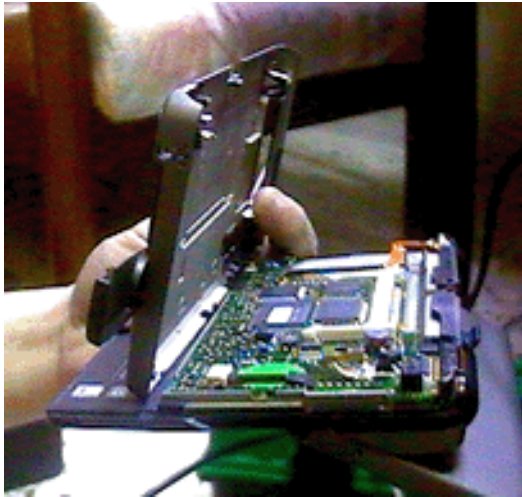
These instructions assume the use of the Psionflexi.co.uk **installation kit**



Remove all Batteries and the stylus.
Remove the 3 screws, one is hidden under the warranty sticker.



Now open up the screen, and gently lift up the bottom casing at the back slightly. Then slide the bottom forwards to release the lugs.



Now you can remove the bottom casing completely.



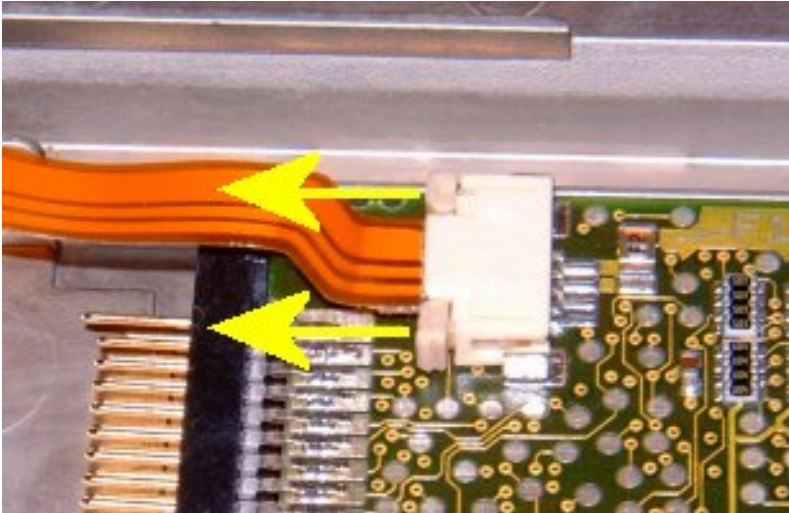
Close the screen and flip the Psion over.



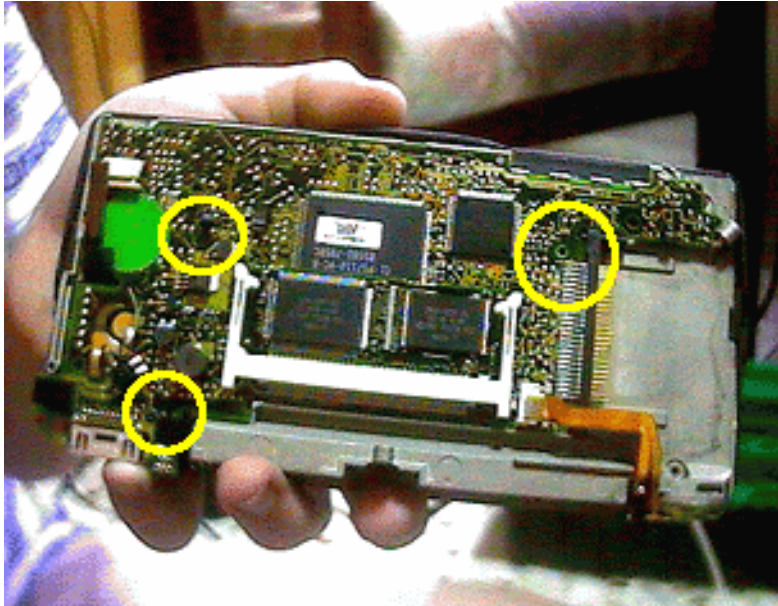
Pull out the battery holder cover/rear casing. You need to have the screen and battery compartment closed when you do this. It can be quite tight, so be careful not to damage it. It is attached by small lugs to the casing. If it gets stuck this is usually at the top near the screen. The GENTLE use of a small screwdriver and SLIGHT bending of the casing may help here.



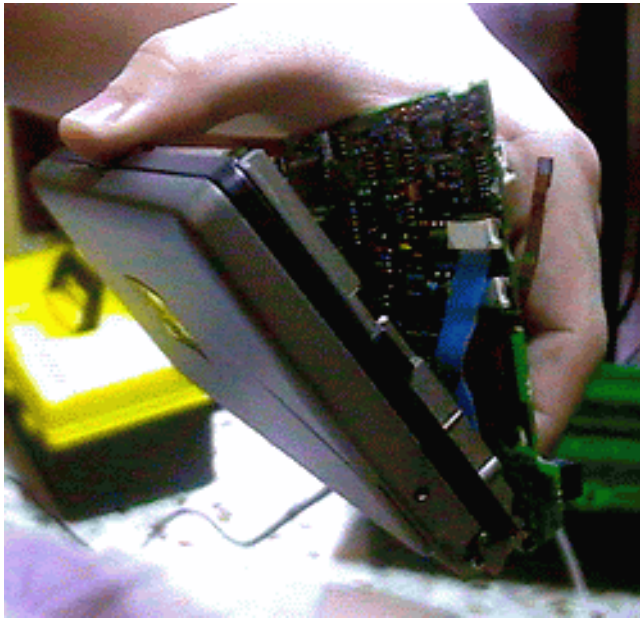
Now you can remove it completely. Note the two metal springs meeting in the middle (you will need to know this later).



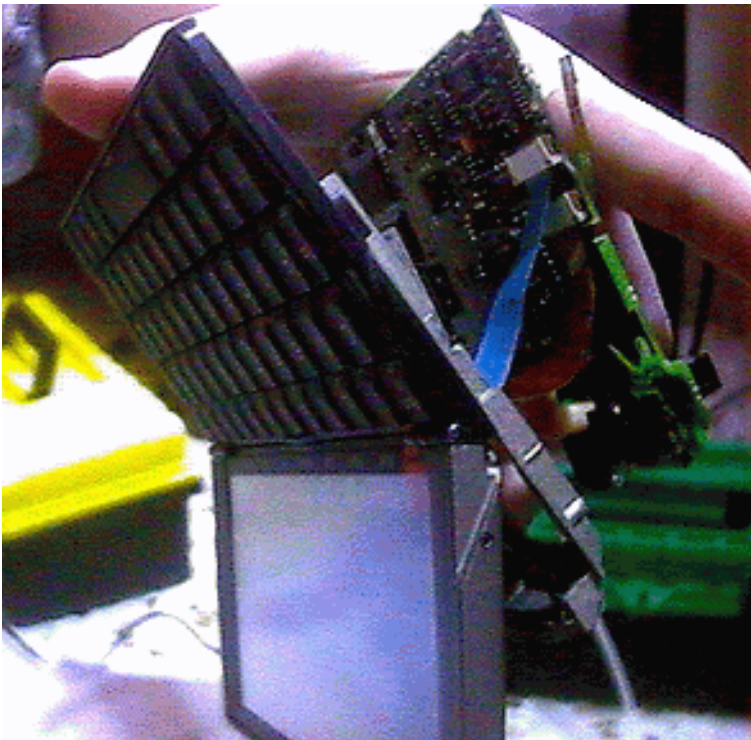
Remove the speaker and battery +ve flexi. Do this by moving the two lugs on the connector towards the flexi and then removing the flexi. Note how this is done as it is the same as the other flexi's



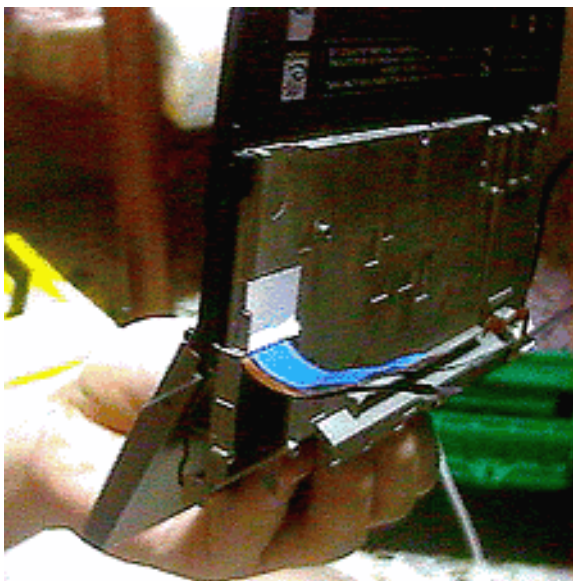
Remove the 3 screws.



Gently ease the motherboard away from the chassis. See the flexi's there? The blue one is from the keyboard and the brown one is from the screen. You need to remove them before you can take out the motherboard.



You'll notice a black tape at the back of the motherboard. GENTLY pull it together with the motherboard away from the chassis as you open up the screen. The cables pass from the screen to the motherboard through a small opening in the Chassis. (see next picture). You need the cables to come through this slot rather than bend below the screen. There should now be enough space for you to safely remove the cables.

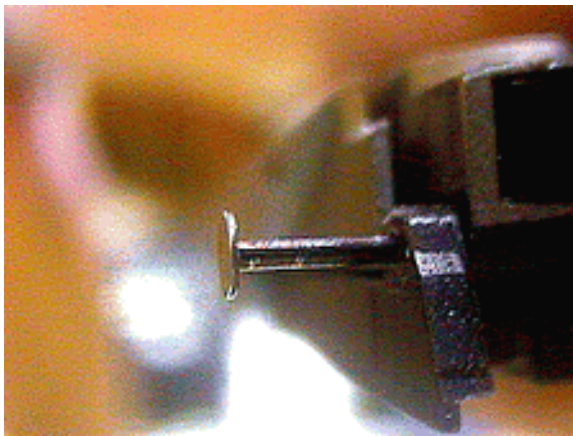


The cables come out of the sockets by releasing the locks either side of each ZIF (Zero Insertion Force) socket (just like the battery/speaker flexi above). Release these locks by sliding the locks away from the socket using a small screwdriver or similar. You may need to push each side several times as one side can move back when you push the other,

The picture shows the cables once the motherboard is removed.



Now you need to remove the screen assembly from the chassis. We mentioned the two metal springs in the rear center just behind the screen - these need to be unclipped. Close the screen and with a small pair of pliers gently twist and lift the rear of each wire. The aim is to lift the rear of the wire over the bump and drop the front of the wire under the plastic lug. Be VERY careful not to snap the front of the plastic lug off. Holding the wire down with your finger while you twist the wire also helps.



The screen and keyboard are held together by 2 pins on the side. Open the screen and use a penknife/blade to gently ease them out and remove them.



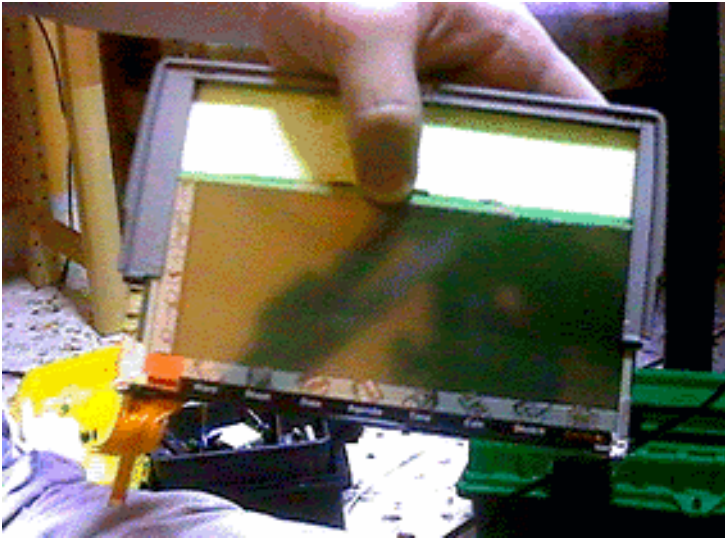
Now gently slide the keyboard right off the front of the machine taking care not to damage the blue flexi attached to it. You may need to slightly close the screen to free the flexi. Now here you have the Keyboard!



Now open the screen and keep going so it goes right past the battery compartment and almost under the chassis. Take care to ensure the flexi slides nicely through and then out of the chassis slot. This allows access to remove the springs



Now slide the screen slightly to the left and then to the right to release the springs from the side clips and hence the screen from the chassis.



The screen now simply slides out of the casing. (leave the corrugated clear plastic film in place in the casing). Some people find this quite difficult to remove. This is caused by the pins that hold the wires in the screen housing digging into the screen. If you are careful you can gently squeeze the screen housing near the pins and push them out slightly.

[Home](#)

[1. Opening](#)

[2. Removing](#)

[3. Preparation](#)

[4. Attachment](#)

[5. Reassembly](#)

[Soldering FAQ](#)

[Installation Kit](#)

[Opening](#) - [Removing](#) - [Preparation](#) - [Attachment](#) - [Reassembly](#)